

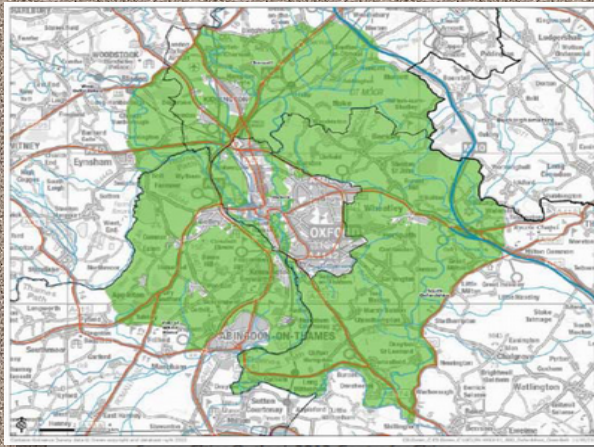


Participatory Planning Presentation 2018
 Team 6 | Marginal Gains



Presentation delivered at the Deloitte Housing Datathon, 2-3 July 2018 in Reading.

Unaffordable Oxford



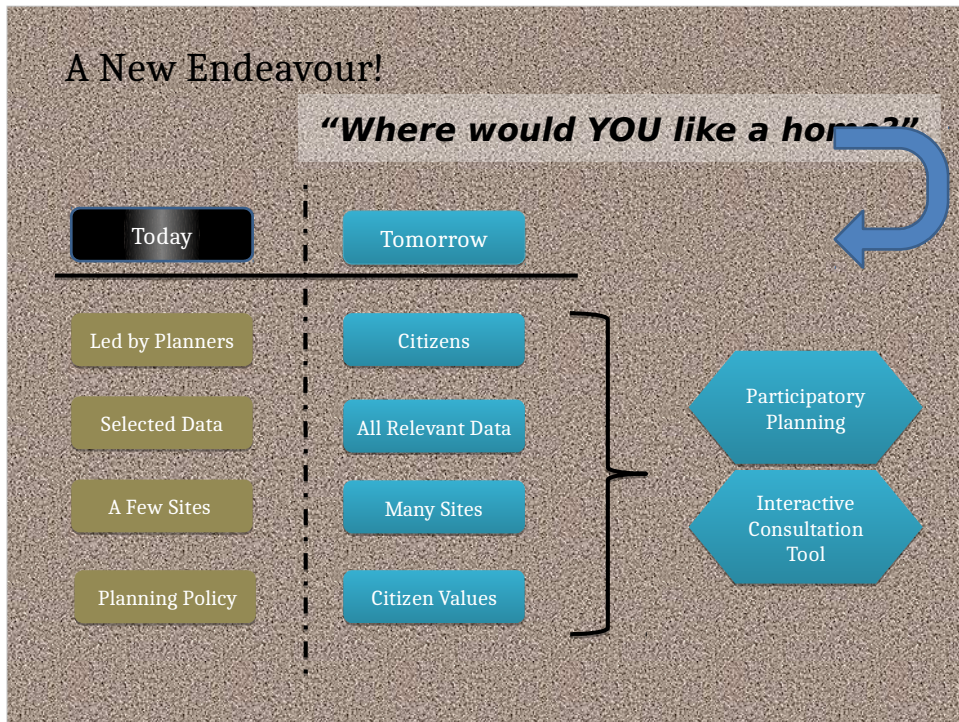
Housing supply in Oxford has a number of constraints:

- Historic centre
- Flood plains & Ground water flooding
- Green belt
- Economic expansion competing for space
- Improved infrastructure

"There is...no clear solution to the question of how and where new housing should be delivered."

Source: Savills 'Spotlight Oxfordshire Development' (Spring 2015)

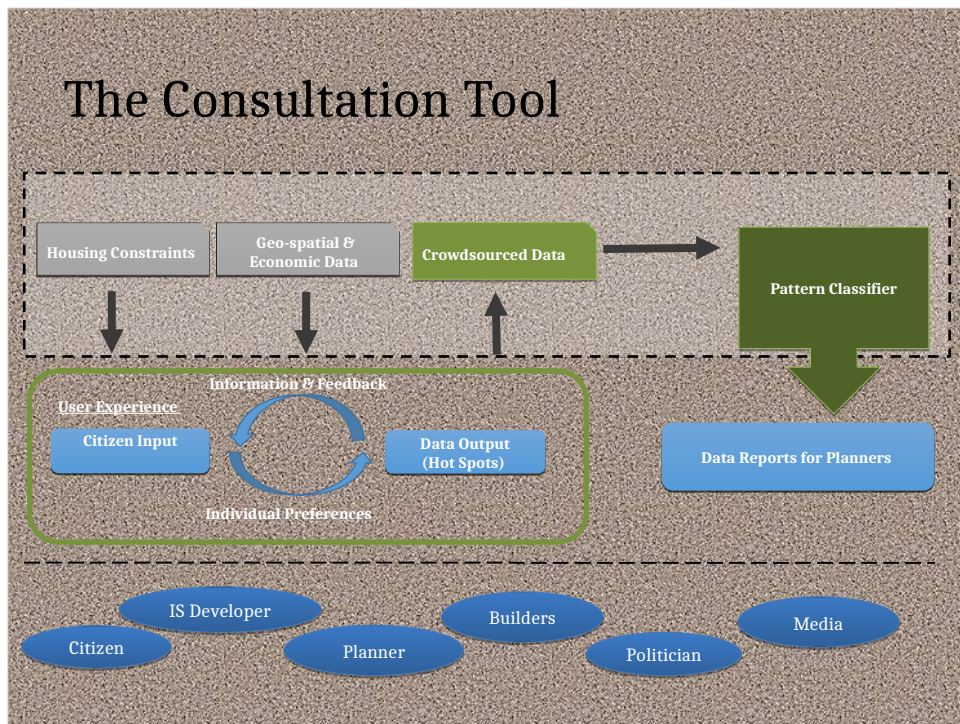
Oxford is the most unaffordable place in England for buying or renting housing. Local councils and developers need to find places to build housing that people can actually afford, somewhere in Oxfordshire. So we have chosen Oxford and Oxfordshire as a test case for this Datathon.



So how do you tackle the issue?

Currently developers and planners pick a small area, look at the data for that area, prepare a proposal then ask citizens whether to build there.

Instead, take all the data for a large area, let citizens explore it to find the places that match their values, then tell the planners to look there.



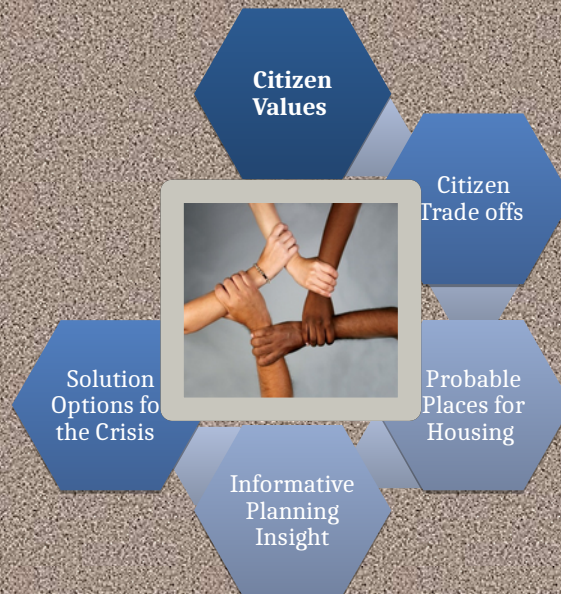
Using external data sources a spatial view of land constraints can be built in a user friendly visual display.

The public provide input on their preferences through check boxes and sliders. The map is updated to show where houses can be built that meet their preferences.

Over a consultation period hundreds of citizens use the tool, building up data on citizen preferences.

Theses are analysed and presented in reports to planners.

“What are the next steps we should take as a society to tackle the housing crisis in the South East of England?”



How can this help tackle the housing crisis in SE England? Citizens, based on their values, make trade offs between their preferences to find probable places for housing. This informs planners, providing insight into citizen needs and wishes, making it easier to come up with acceptable solutions to the crisis.

Thank You!!



Datathon Team:
Audrey L.
Bardeep J.
David N.
Luke H.
Tusti G.

This was a presentation developed, along with a demonstration, by a team at the Deloitte Housing Dataton in Reading, on 2-3 July 2018.